

LE SUEUR COUNTY

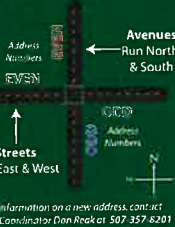
County History

Le Sueur County is named after the great French explorer Pierre Charles Le Sueur who travelled up the St. Peter's River (now known as the Minnesota River) in the year 1700. The county seat of Le Sueur County is Le Center. The city's original name, Le Sueur Centre, was changed to Le Center in 1920. The Le Sueur County Courthouse (pictured on the front cover) was built in 1896-97 with extensive remodeling taking place in 1974-75 and again in 1993-95.



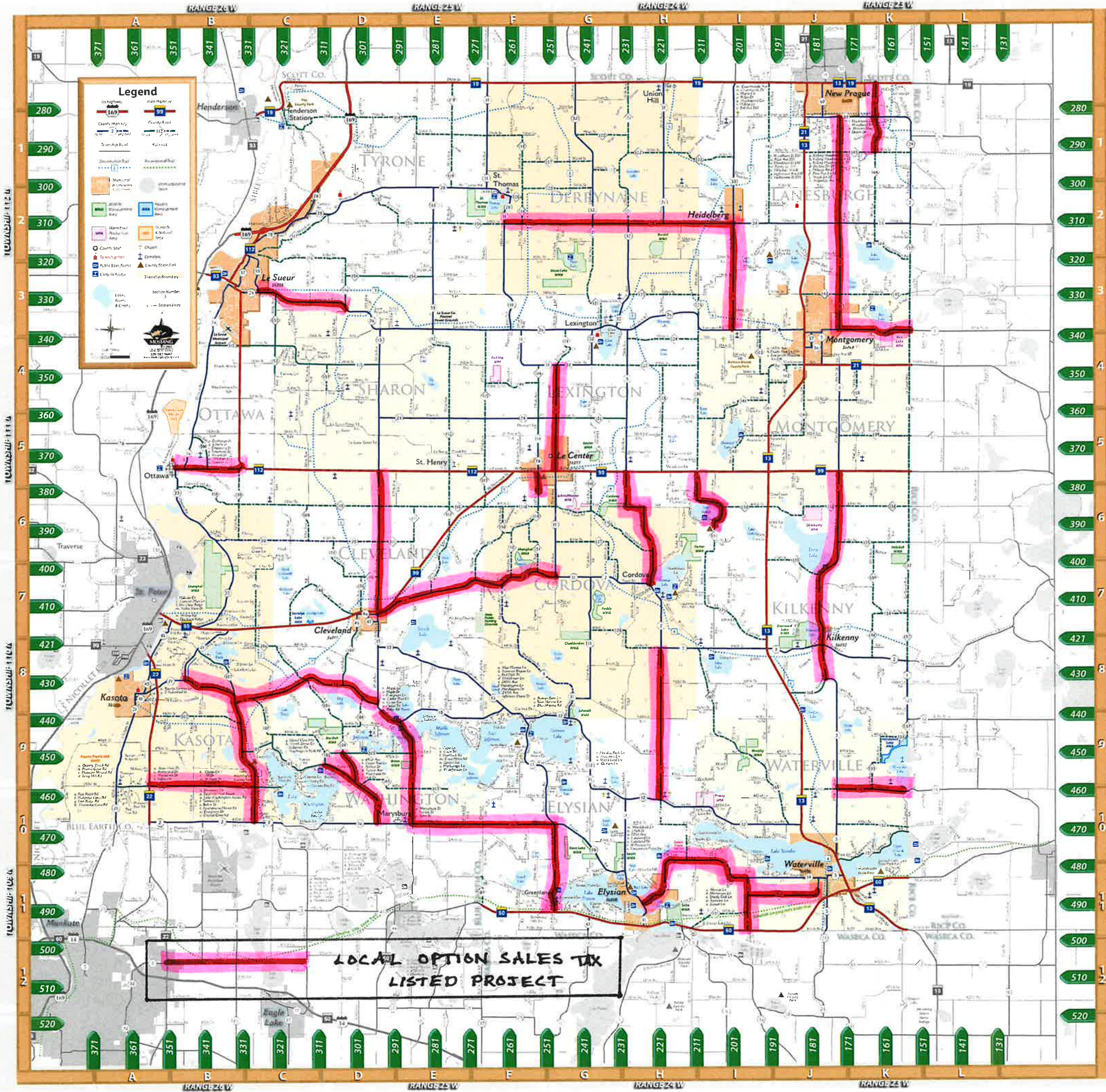
E-911 Addressing System

Le Sueur County's Enhanced 911 addressing system is based on a grid with streets running east and west & avenues running north and south. Roads that do not have a predominant direction are individually named. All dead end roads are named lines.
Street numbers increase from north to south and avenue numbers increase from west to east. The street and avenue numbers change by 10 for each mile traveled.
Individual addresses change by 1000 for each mile. Homes along the north and west sides of roads have even-numbered addresses. Homes along the south and east sides of roads have odd-numbered addresses.
The roads and addresses around Lake Washington do not follow the same numbering system as the rest of the county. The area had a locatable address system in place before the county implemented the current system.



Le Sueur County Master Road Index

Highway	Route	Description
169	169	Highway
271	271	Highway
281	281	Highway
291	291	Highway
301	301	Highway
311	311	Highway
321	321	Highway
331	331	Highway
341	341	Highway
351	351	Highway
361	361	Highway
371	371	Highway
381	381	Highway
391	391	Highway
401	401	Highway
411	411	Highway
421	421	Highway
431	431	Highway
441	441	Highway
451	451	Highway
461	461	Highway
471	471	Highway
481	481	Highway
491	491	Highway
501	501	Highway
511	511	Highway
521	521	Highway



- ### City Halls
- Cleveland 205 4th St (507) 931-6380
 - Elysian 110 W Main St (507) 267-4708
 - Heidelberg 31522 181st Ave
 - Kasota 200 N Webster St (507) 931-3290
 - Kilkenny 288 S Laurel Ave
 - Le Center 10 W Tyrone St (507) 357-4450
 - Le Sueur 203 S 2nd St (507) 665-6401
 - Montgomery 201 Ash Ave W (507) 364-8888
 - New Prague 18 Central Ave N (952) 758-4401
 - Waterville 200 3rd St (507) 367-8300
- ### County Offices
- 88 South Park Ave
Le Center, MN 56057
- Assessor (507) 357-8213
 - County Auditor/ Treasurer (507) 357-2278
 - County Administrator (507) 357-2251
 - Building Maintenance (507) 357-8278
 - Court Administrator (507) 357-8238
 - Court Services/Probation (507) 357-8238
 - Environmental Services (507) 357-8538
 - County Extension (507) 357-8230
 - Highway Department (507) 357-8204
 - Human Services (507) 357-8288
 - Human Resources (507) 357-2251
 - Information Services (507) 357-2251
 - License Bureau (507) 357-8265
 - Public Health Nursing (507) 357-8246
 - Recorder (507) 357-8269
 - Sheriff's Department (507) 357-4440
 - Veran Service (507) 357-8279
 - Victim/Witness Program (507) 357-8512
 - Emergency Management (507) 357-2251
- FOR EMERGENCIES CALL 911**



official county highway map
LE SUEUR COUNTY

NEP Nature Center
A Le Sueur County Park

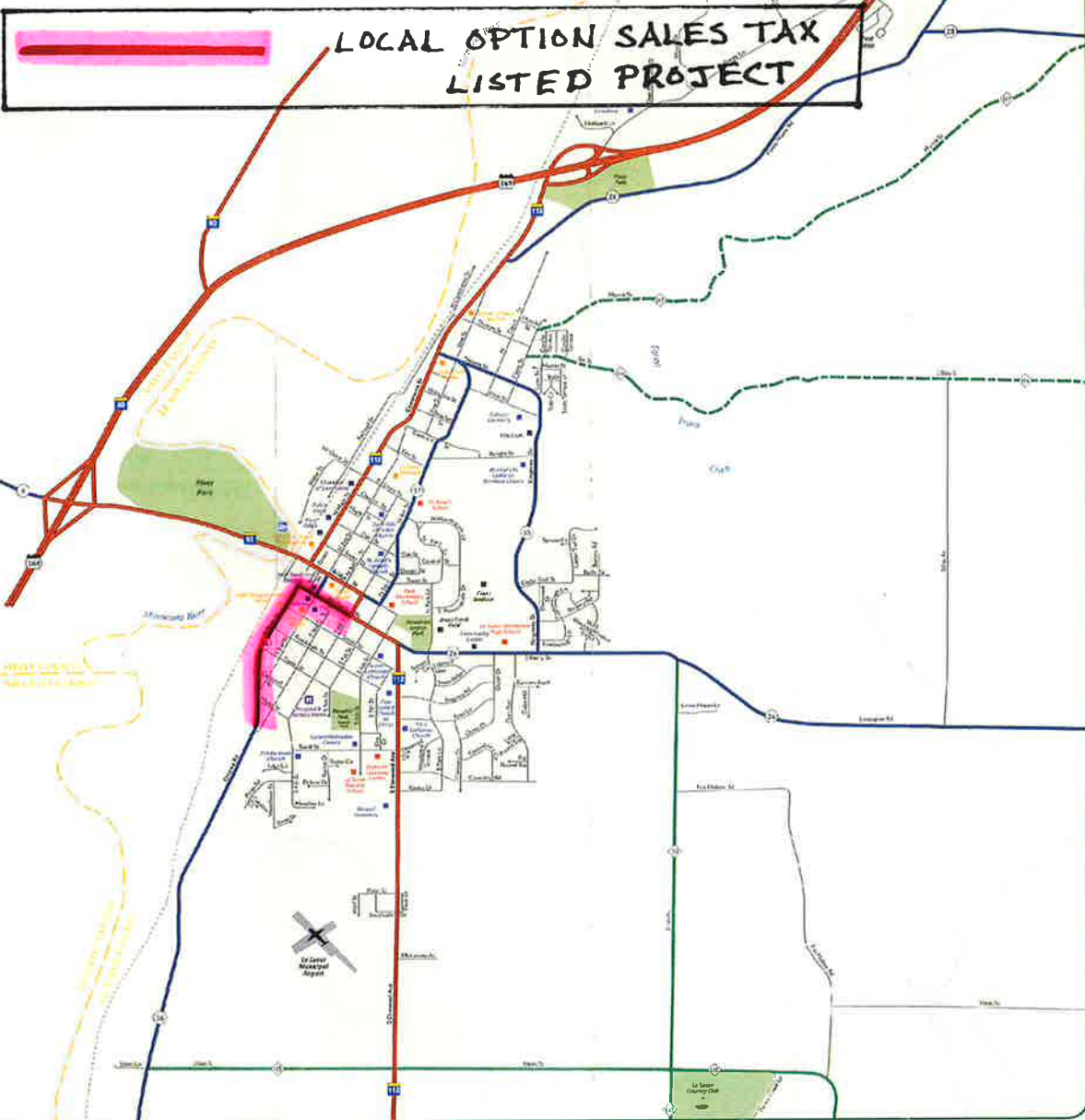
2011

Includes detailed city maps of:
Cleveland, Elysian, Heidelberg, Kasota, Kilkenny, Le Center, Le Sueur, Montgomery, New Prague, Waterville.

Also featuring:
Points of Interest
Scenic/Trail
Parks & Nature areas

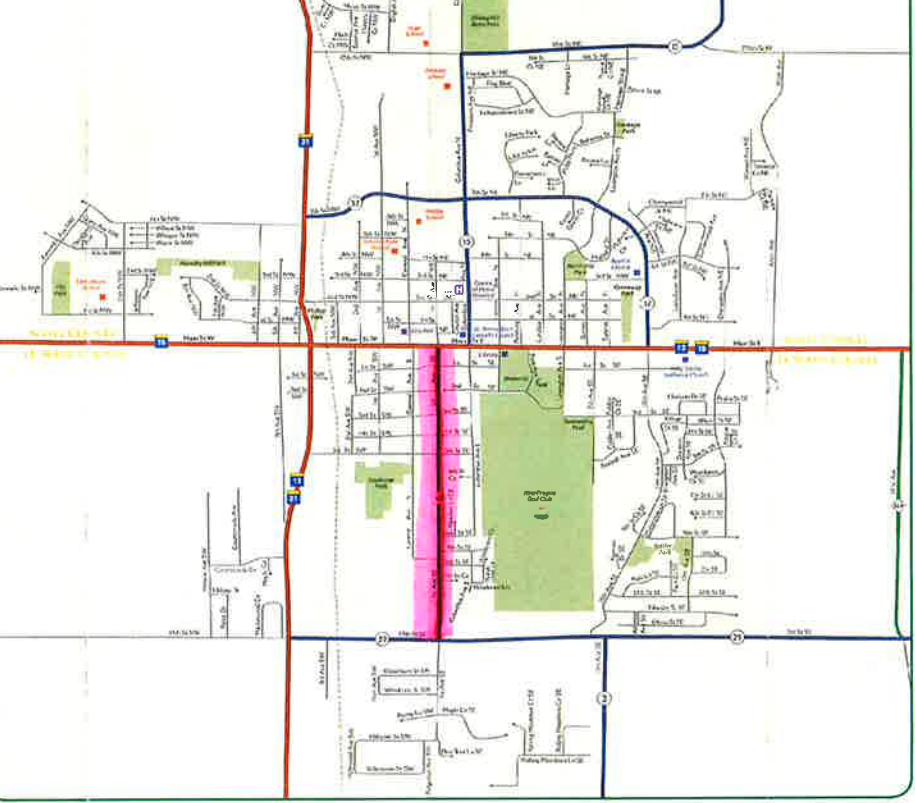
Le Sueur

56058



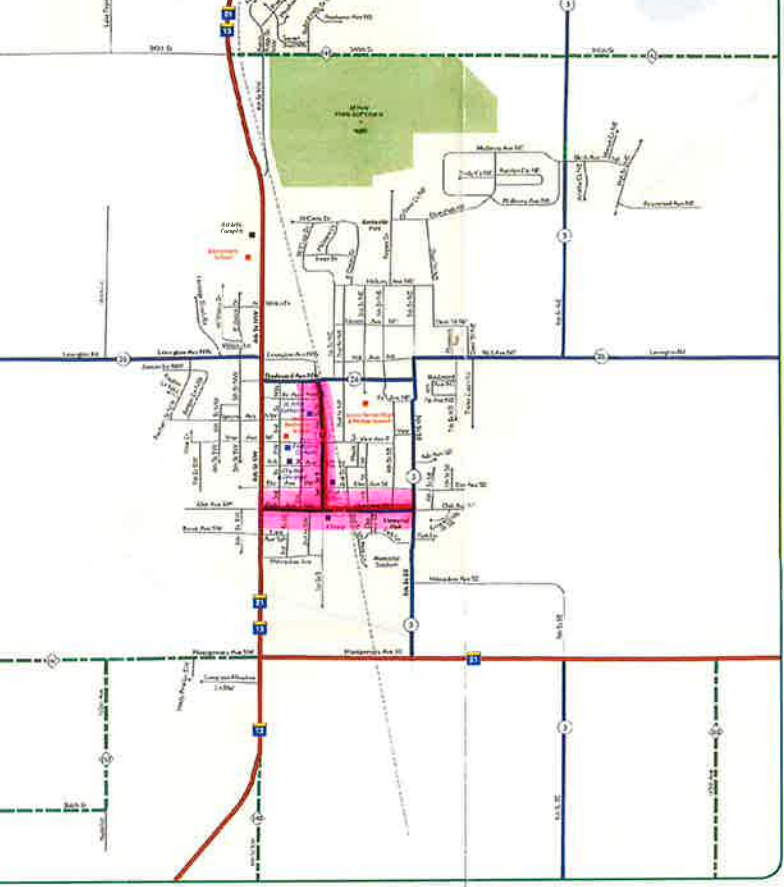
New Prague

56071



Montgomery

56069



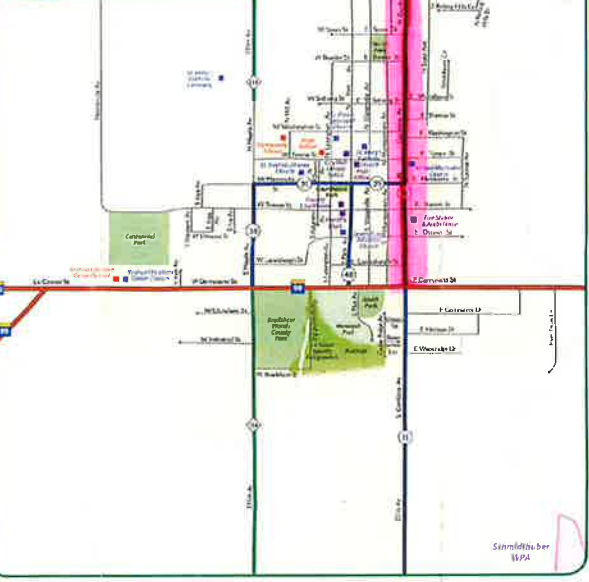
Heidelberg

56071



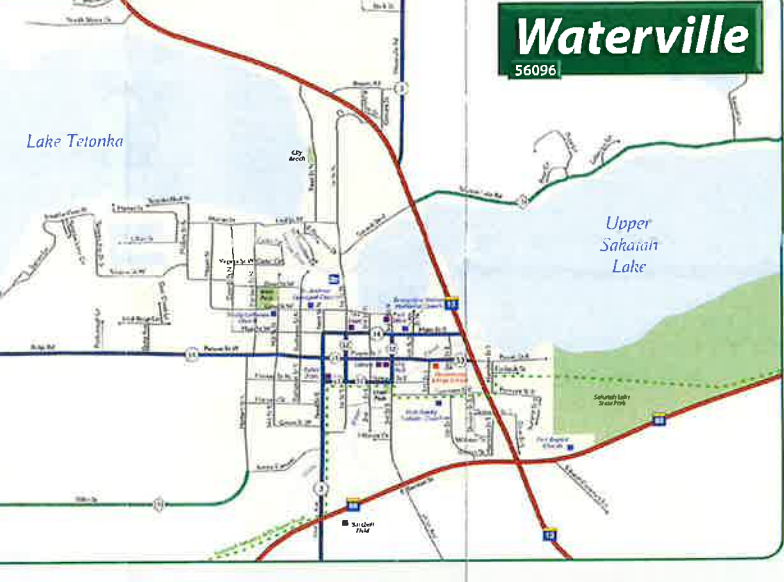
Le Center

56057



Waterville

56096



Elysian

56028



Kasota

56050



Kilkenny

56052



Cleveland

56017



Legend

