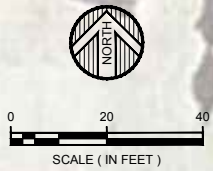


60' TO SOUTH CURB LINE OF MINNESOTA STREET.



S. LEXINGTON AVENUE

S. PARK AVENUE

W. SHARON STREET

EXISTING (23 SPACES)
 9' WIDE STALLS.
 2 ADA SPACES.
 2 ENTRANCE / EXIT.

PROPOSED (28 SPACES)
 10' STALLS.
 2 ADA SPACES.
 1 ADA VAN ACCESS.
 "NO PARKING" FOR DUMPSTER ACCESS.
 1 ENTRANCE / 2 EXIT.

EX. 6.0%
 1.5% FIN. FLR. EL. 1063.00
 FLOWLINE EL. 1062.75
 GRADE BREAK
 EX. 8.0%
 8.0%
 EX. 7.0%
 GRADE BREAK
 EX. 8.0%
 12.0%
 FLOWLINE EL. 1058.35
 SDWK. EL. 1054.5

MEMBER CERTIFY THAT THIS PLAN, SPECIFICATION, OR REPORT WAS PREPARED BY ME OR UNDER MY DIRECT SUPERVISION AND THAT I AM A DULY LICENSED PROFESSIONAL ENGINEER UNDER THE LAWS OF THE STATE OF MINNESOTA.

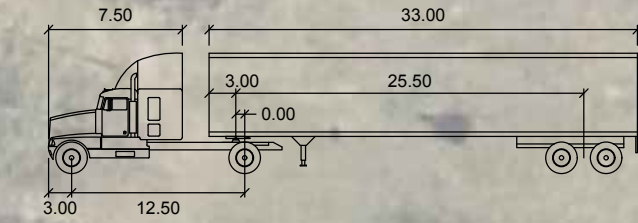
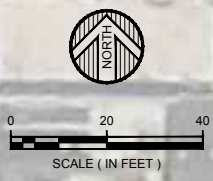
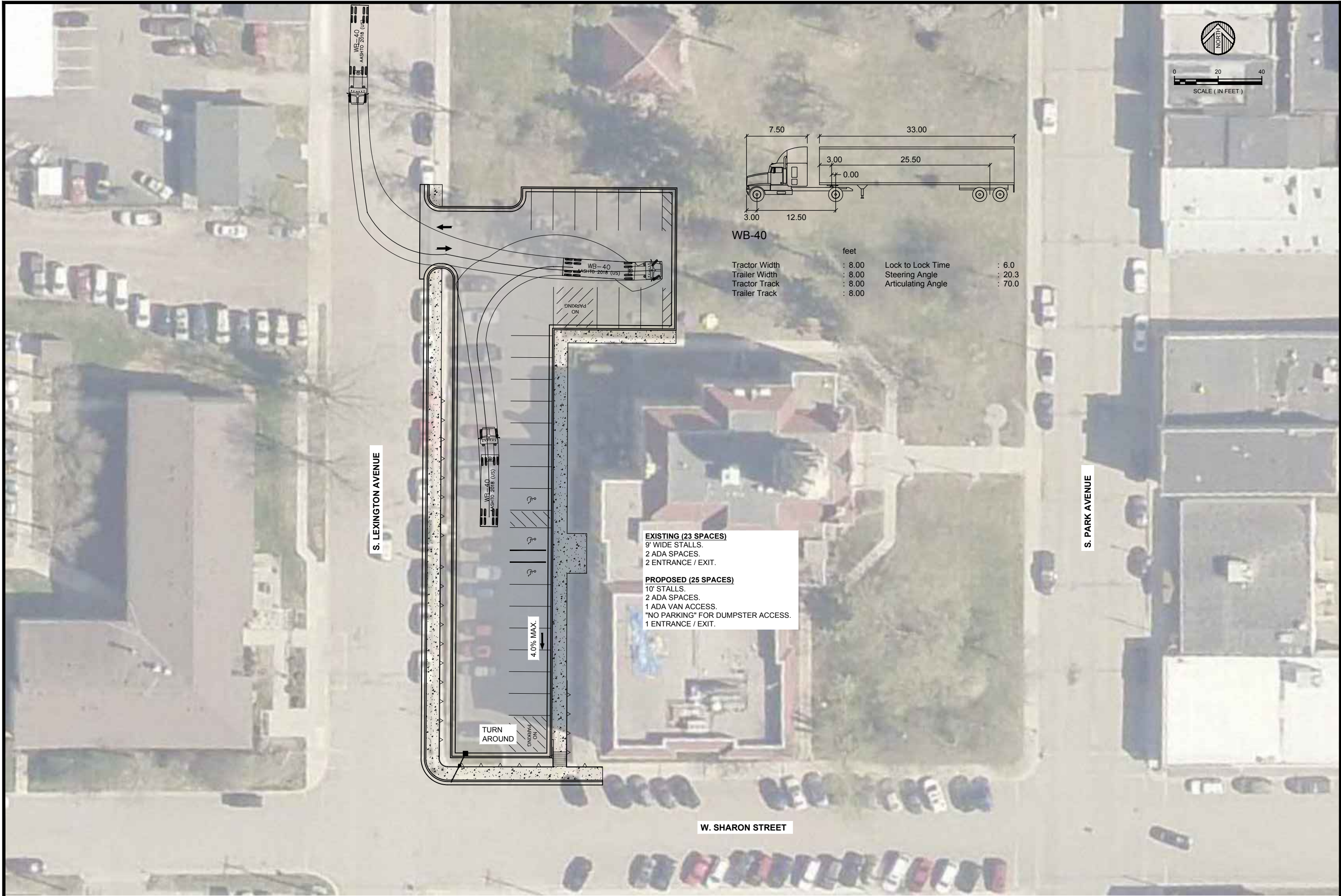
JEFFREY L. KUHN DATE: MM/DD/YYYY BC. NO. 2674

REVISIONS DESCRIPTION	DATE	REVA

DATE: JUNE, 2022	AS SHOWN	JAK
SCALE:	DRAWN BY:	CHK
CHECKED BY: LJK	JOB NUMBER: 2022-10542	

COURTHOUSE WEST PARKING LOT REVISION
 LE SUEUR COUNTY COURTHOUSE
 LE CENTER, MN.
 WEST PARKING LOT OPTION A

SHEET NO. C1.1



WB-40

	feet		
Tractor Width	: 8.00	Lock to Lock Time	: 6.0
Trailer Width	: 8.00	Steering Angle	: 20.3
Tractor Track	: 8.00	Articulating Angle	: 70.0
Trailer Track	: 8.00		

EXISTING (23 SPACES)
 9' WIDE STALLS.
 2 ADA SPACES.
 2 ENTRANCE / EXIT.

PROPOSED (25 SPACES)
 10' STALLS.
 2 ADA SPACES.
 1 ADA VAN ACCESS.
 "NO PARKING" FOR DUMPSTER ACCESS.
 1 ENTRANCE / EXIT.

MEMBER CERTIFY THAT THIS PLAN SPECIFICATION FOR REPORT WAS PREPARED BY ME OR UNDER MY DIRECT SUPERVISION AND THAT I AM A DULY LICENSED PROFESSIONAL ENGINEER UNDER THE LAWS OF THE STATE OF MINNESOTA.
 JEFFREY L. KUHN DATE: MM/DD/YYYY BC. NO. 2674

DATE	REVISION DESCRIPTION	BY
JUNE, 2022 <td></td> <td></td>		
AS SHOWN		
DRAWN BY: JJK		
CHECKED BY: JJK		
JOB NUMBER: 2022-10542		

COURTHOUSE WEST PARKING LOT REVISION
 LE SUEUR COUNTY COURTHOUSE
 LE CENTER, MN.
 WEST PARKING LOT OPTION B



S. LEXINGTON AVENUE

S. PARK AVENUE

W. SHARON STREET

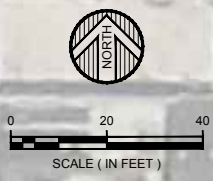
EXISTING (23 SPACES)
 9' WIDE STALLS.
 2 ADA SPACES.
 2 ENTRANCE / EXIT.

PROPOSED (28 SPACES)
 10' STALLS.
 2 ADA SPACES.
 1 ADA VAN ACCESS.
 "NO PARKING" FOR DUMPSTER ACCESS.
 1 ENTRANCE / EXIT.

4.0% MAX.

TURN AROUND

NO PARKING



WIDSETH
 ARCHITECTS • ENGINEERS • SCIENTISTS • SURVEYORS

MEMBER CERTIFY THAT THIS PLAN SPECIFICATION OR REPORT WAS PREPARED BY ME OR UNDER MY DIRECT SUPERVISION AND THAT I AM A DULY LICENSED PROFESSIONAL ENGINEER UNDER THE LAWS OF THE STATE OF MINNESOTA.
 JEFFREY L. KUHN DATE: MM/DD/YYYY/BC. NO. 2674

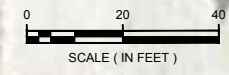
DATE	REV#	REVISIONS DESCRIPTION

DATE: JUNE, 2022	SCALE: AS SHOWN	DRAWN BY: JJK	CHECKED BY: JJK	JOB NUMBER: 2022-10542
------------------	-----------------	---------------	-----------------	------------------------

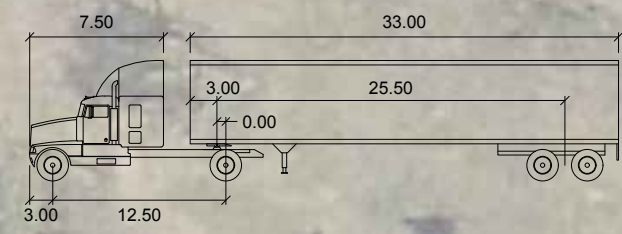
COURTHOUSE WEST PARKING LOT REVISION
 LE SUEUR COUNTY COURTHOUSE
 LE CENTER, MN.
 WEST PARKING LOT OPTION C

SHEET NO.
C1.3

J:\Le Sueur County-37805\2022-10542\CADD\Civil\tr-cd-2022-10542-geolayout-C.dwg Plotted by: Jim Krueger 6/10/2022 4:02:18 PM © 2022 WIDSETH SMITH NOLTING & ASSOCIATES, INC.



60' TO SOUTH CURB LINE OF MINNESOTA STREET.



WB-40

feet	
Tractor Width	: 8.00
Trailer Width	: 8.00
Tractor Track	: 8.00
Trailer Track	: 8.00
Lock to Lock Time	: 6.0
Steering Angle	: 20.3
Articulating Angle	: 70.0

S. LEXINGTON AVENUE

S. PARK AVENUE

EXISTING (23 SPACES)
 9' WIDE STALLS.
 2 ADA SPACES.
 2 ENTRANCE / EXIT.

PROPOSED (31 SPACES)
 10' STALLS.
 2 ADA SPACES.
 1 ADA VAN ACCESS.
 "NO PARKING" FOR DUMPSTER ACCESS.
 1 ENTRANCE / 2 EXIT.

1.5% FIN. FLR. EL. 1063.00

8.0% FLOWLINE EL. 1062.75

12.0%

FLOWLINE EL. 1058.35

SDWK. EL. 1054.5

W. SHARON STREET

MEMBER CERTIFY THAT THIS PLAN, SPECIFICATION, OR REPORT WAS PREPARED BY ME OR UNDER MY DIRECT SUPERVISION AND THAT I AM A DULY LICENSED PROFESSIONAL ENGINEER UNDER THE LAWS OF THE STATE OF MINNESOTA.

REVISIONS DESCRIPTION	DATE	REV#

DATE:	JUNE, 2022
SCALE:	AS SHOWN
DRAWN BY:	JMK
CHECKED BY:	EJK
JOB NUMBER:	2022-10542

COURTHOUSE WEST PARKING LOT REVISION
 LE SUEUR COUNTY COURTHOUSE
 LE CENTER, MN.
 WEST PARKING LOT OPTION C

SHEET NO. C1.4