

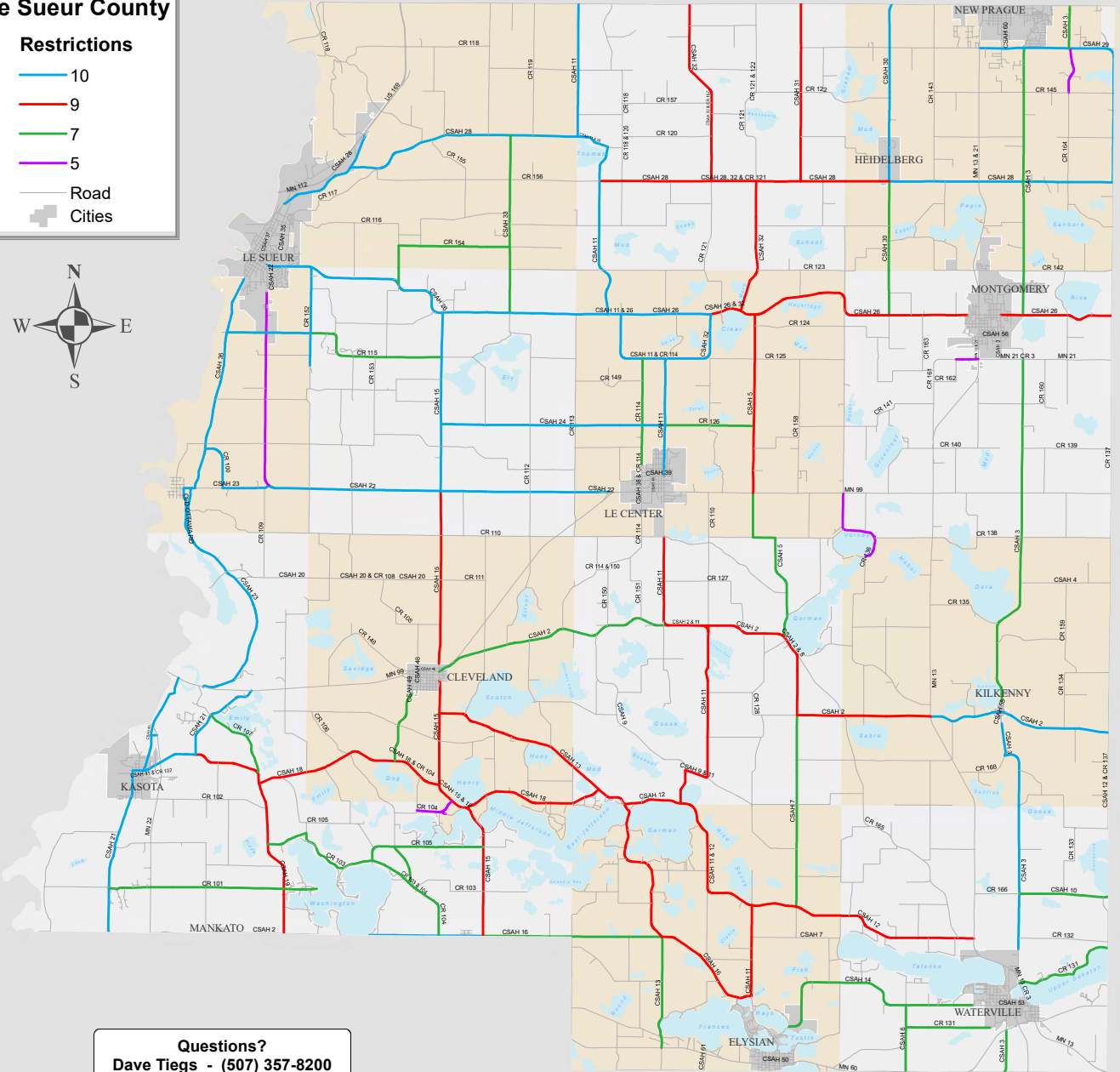
# 2021 Spring Road Restrictions

ALL PAVED ROADS ARE CONSIDERED TO HAVE A 10 TON WEIGHT RESTRICTION UNLESS MARKED OTHERWISE  
 ALL COUNTY GRAVEL ROADS HAVE A 5 TON LIMIT

## Le Sueur County

### Restrictions

- 10
- 9
- 7
- 5
- Road
- Cities



**Questions?**  
 Dave Tiegs - (507) 357-8200  
 Robbie Kopet - (507) 357-8205

