

# 2017 Broadband Service Inventory

Unserviced, [www.deed.state.mn.us](http://www.deed.state.mn.us)  
and Broadband Areas

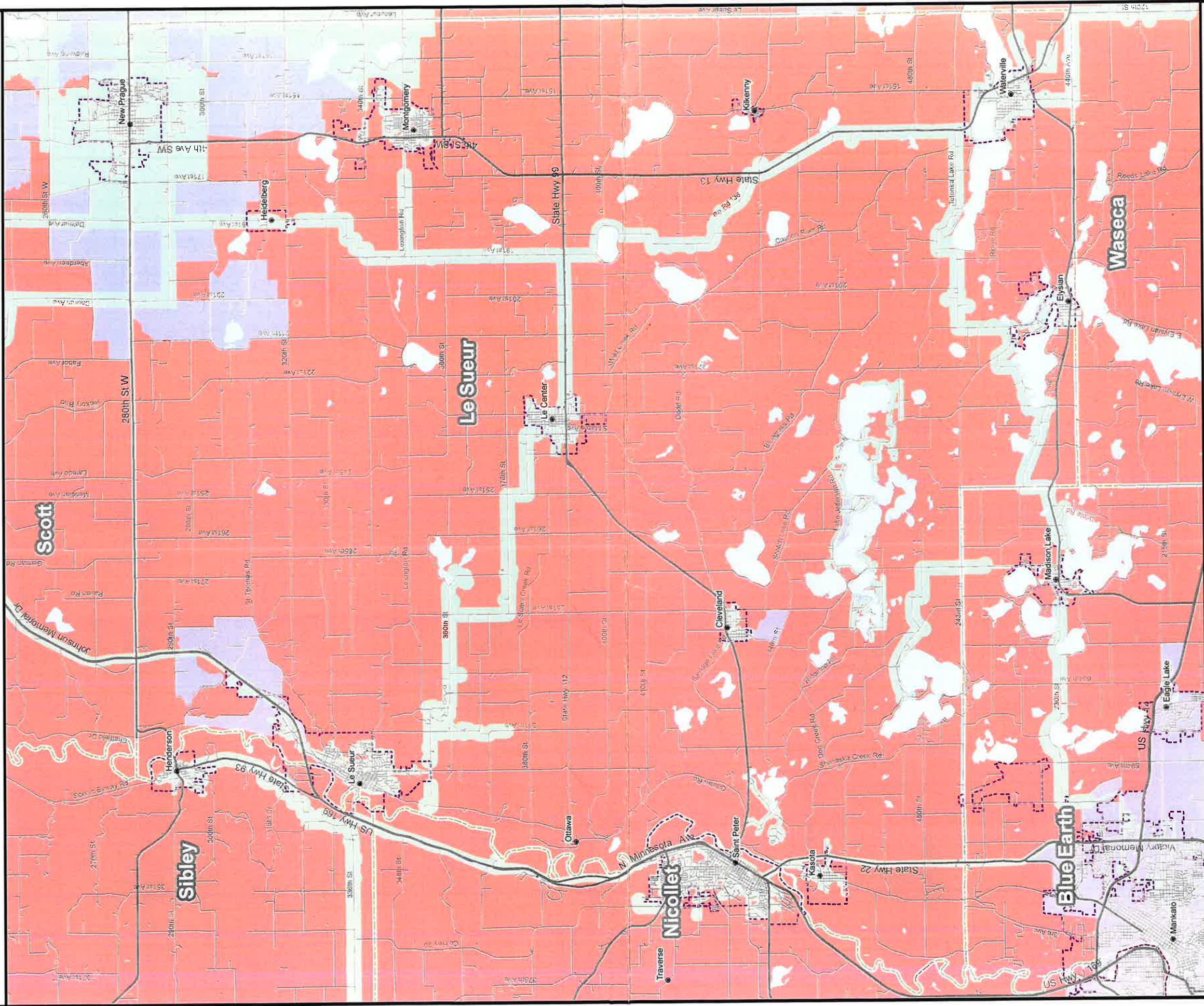


Le Sueur County

Minnesota

Created October 2017

Border-to-Border  
Broadband  
Development  
Grant Program



- Interstate
- US Road
- Local Road
- Municipal Boundary
- County Boundary
- Water

- Wireline Broadband of at Least 100M/20M
- Underserved Area (Wireline Broadband of at Least 25M/3M but less than 100M/20M)
- Unserviced Area (No Wireline Broadband of at Least 25M/3M)



This map was prepared by Connected Nation under contract with the Minnesota Department of Employment and Economic Development. The map represents areas of broadband service availability from information provided by broadband providers to Connected Nation and modified based on validation tools. This release reflects updates received as of October 2017.

Additional maps and data are available at <http://mn.gov/deed/programs-services/broadbandmaps>. Upon request, this information can be made available in alternate formats for people with disabilities by contacting the DEED Office of Broadband Development at 651-295-7670.

Submit questions or recommended changes to: [DEED.broadband@state.mn.us](mailto:DEED.broadband@state.mn.us)

© Copyright 2017, State of Minnesota, St. Paul, MN